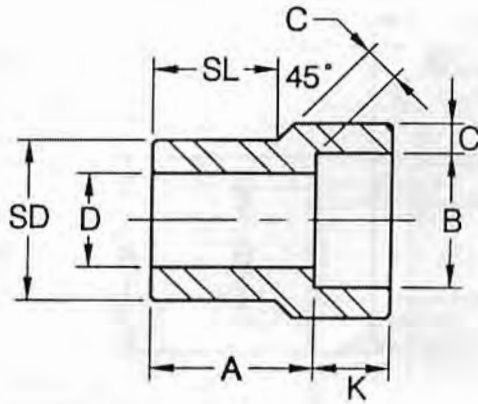


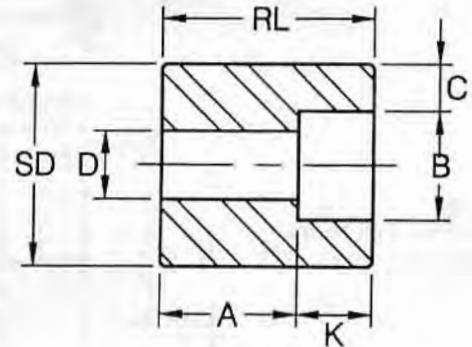


# REDUCER INSERTS

SOCKET WELDING MSS-SP-79-1992



TYPE 1



TYPE 2<sup>(1)</sup>

Dimensions in Millimeters.

Nom. Pipe Size	Type(2)		Socket		Shank Dia. SD	Laying Length A		Bore D		Wall Min. C		Length			
			Dia. B	Depth Min. K		3M	6M	3M	6M	3M	6M	SL		RL(Min)	
	3M	6M										3M	6M	3M	6M
3/8 × 1/4	1	1	14.35	10	17.15	19	21	9.0	6.5	3.78	4.60	14	16		
1/2 × 3/8	1	1	17.78	10	21.34	21	23	12.5	9.0	4.01	5.03	16	16		
1/2 × 1/4	1	1	14.35	10	21.34	21	21	9.0	6.5	3.78	4.60	16	16		
3/4 × 1/2	1	1	21.97	10	26.67	22	25	16.0	11.5	4.67	5.97	17	19		
3/4 × 3/8	2	1	17.78	10	26.67	16	22	12.5	9.0	4.01	5.03		19	27	
3/4 × 1/4	2	2	14.35	10	26.67	18	22	9.0	6.5	3.78	4.60			27	32
1 × 3/4	1	1	27.31	13	33.40	24	28	21.0	15.5	4.90	6.96	19	21		
1 × 1/2	2	1	21.97	10	33.40	16	28	16.0	11.5	4.67	5.97		21	28	
1 × 3/8	2	2	17.78	10	33.40	18	22	12.5	9.0	4.01	5.03			28	33
1 × 1/4	2	2	14.35	10	33.40	19	24	9.0	6.5	3.78	4.60			28	33
1-1/4 × 1	1	1	34.04	13	42.16	25	30	26.5	20.5	5.69	7.92	21	22		
1-1/4 × 3/4	2	2	27.31	13	42.16	18	21	21.0	15.5	4.90	6.96			32	35
1-1/4 × 1/2	2	2	21.97	10	42.16	19	22	16.0	11.5	4.67	5.97			32	35
1-1/4 × 3/8	2	2	17.78	10	42.16	21	24	12.5	9.0	4.01	5.03			32	35
1-1/4 × 1/4	2	2	14.35	10	42.16	22	25	9.0	6.5	3.78	4.60			32	35
1-1/2 × 1-1/4	1	1	42.80	13	48.26	28	35	35.0	29.5	6.07	7.92	22	25		
1-1/2 × 1	2	1	34.04	13	48.26	18	29	26.5	20.5	5.69	7.92		25	33	
1-1/2 × 3/4	2	2	27.31	13	48.26	19	25	21.0	15.5	4.90	6.96			33	40
1-1/2 × 1/2	2	2	21.97	10	48.26	21	27	16.0	11.5	4.67	5.97			33	40
1-1/2 × 3/8	2	2	17.78	10	48.26	22	28	12.5	9.0	4.01	5.03			33	40
2 × 1-1/2	1	1	48.90	13	60.32	32	39	41.0	34.0	6.35	8.9	25	28		
2 × 1-1/4	2	2	42.80	13	60.32	21	24	35.0	29.5	6.07	7.92			38	41
2 × 1	2	2	34.04	13	60.32	22	25	26.5	21.0	5.69	7.92			38	41
2 × 3/4	2	2	27.31	13	60.32	24	27	21.0	15.5	4.90	6.96			38	41
2 × 1/2	2	2	21.97	10	60.32	25	28	16.0	11.5	4.67	5.97			38	41

(1) At the option of the manufacturer Type 2 Reducers may be furnished in Type 1 configuration.

(2) 3M & 6M symbols denote 3000 and 6000 classes.