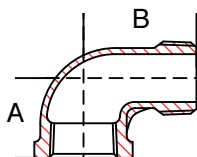


**Fig. S3114E & S3116E - 90° Elbow**

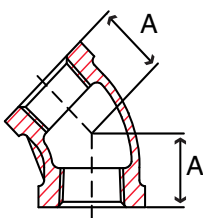
Size in	Part Number		A in	Packing		Weight lb
	304	316		Inner	Master	
1/8	S3114E 001	S3116E 001	0.71	120	480	0.05
1/4	S3114E 002	S3116E 002	0.77	100	400	0.08
3/8	S3114E 003	S3116E 003	0.94	50	200	0.12
1/2	S3114E 004	S3116E 004	1.16	30	120	0.19
3/4	S3114E 006	S3116E 006	1.26	18	72	0.30
1	S3114E 010	S3116E 010	1.44	10	40	0.52
1-1/4	S3114E 012	S3116E 012	1.73	4	16	0.71
1-1/2	S3114E 014	S3116E 014	1.91	3	12	1.07
2	S3114E 020	S3116E 020	2.24	2	8	1.45
2-1/2	S3114E 024	S3116E 024	2.70	-	6	3.26
3	S3114E 030	S3116E 030	3.09	-	3	4.66
4	S3114E 040	S3116E 040	3.82	-	2	7.05

**Fig. S3114SE & S3116SE - 90° Street Elbow**



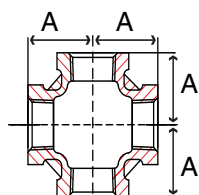
Size in	Part Number		A in	B in	Packing		Weight lb
	304	316			Inner	Master	
1/8	S3114SE001	S3116SE001	0.69	1.00	150	600	0.04
1/4	S3114SE002	S3116SE002	0.83	1.18	100	400	0.07
3/8	S3114SE003	S3116SE003	0.91	1.52	50	200	0.11
1/2	S3114SE004	S3116SE004	1.12	1.69	32	128	0.20
3/4	S3114SE006	S3116SE006	1.24	1.83	12	48	0.29
1	S3114SE010	S3116SE010	1.48	2.09	8	32	0.52
1-1/4	S3114SE012	S3116SE012	1.77	2.48	4	16	0.72
1-1/2	S3114SE014	S3116SE014	1.83	2.72	2	4	0.92
2	S3114SE020	S3116SE020	2.38	3.35	2	8	1.79
2-1/2	S3114SE024	S3116SE024	2.62	4.13	-	4	2.73
3	S3114SE030	S3116SE030	3.09	4.43	-	3	3.87
4	S3114SE040	S3116SE040	3.82	5.04	-	2	6.07

**Fig. S3114F & S3116F - 45° Elbow**



Size in	Part Number		A in	Packing		Weight lb
	304	316		Inner	Master	
1/8	S3114F 001	S3116F 001	0.73	120	480	0.07
1/4	S3114F 002	S3116F 002	0.75	100	400	0.07
3/8	S3114F 003	S3116F 003	0.75	60	240	0.11
1/2	S3114F 004	S3116F 004	0.87	30	120	0.22
3/4	S3114F 006	S3116F 006	0.91	20	80	0.34
1	S3114F 010	S3116F 010	1.10	8	32	0.53
1-1/4	S3114F 012	S3116F 012	1.26	6	24	0.66
1-1/2	S3114F 014	S3116F 014	1.38	3	12	0.93
2	S3114F 020	S3116F 020	1.65	2	8	1.34
2-1/2	S3114F 024	S3116F 024	1.85	-	6	2.87
3	S3114F 030	S3116F 030	2.05	-	4	3.93
4	S3114F 040	S3116F 040	2.60	-	2	5.91

**Fig. S3114X & S3116X - Cross**



Size in	Part Number		A in	Packing		Weight lb
	304	316		Inner	Master	
1/8	S3114X 001	S3116X 001	0.71	50	200	0.11
1/4	S3114X 002	S3116X 002	0.77	50	200	0.18
3/8	S3114X 003	S3116X 003	0.94	24	96	0.31
1/2	S3114X 004	S3116X 004	1.16	10	40	0.43
3/4	S3114X 006	S3116X 006	1.26	8	32	0.62
1	S3114X 010	S3116X 010	1.44	4	16	1.05
1-1/4	S3114X 012	S3116X 012	1.73	3	12	1.49
1-1/2	S3114X 014	S3116X 014	1.91	2	8	1.90
2	S3114X 020	S3116X 020	2.24	-	8	3.04
2-1/2	S3114X 024	S3116X 024	2.70	-	2	5.44
3	S3114X 030	S3116X 030	3.09	-	2	7.32
4	S3114X 040	S3116X 040	3.82	-	1	11.34

HVY PATTERN 150#