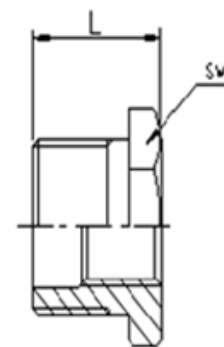
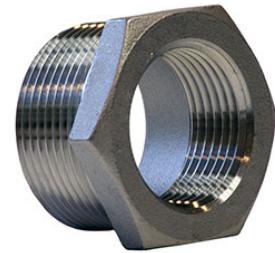


DIMENSIONAL SPECIFICATIONS

STAINLESS STEEL ISO PATTERN FITTINGS 150 LB.

HEX HEAD BUSHING (316)

Part #	Size (IN.)	Approx. Net WT. (LB.)	L	SW
K614-0402	1/4 X 1/8	0.02	0.79	0.63
K614-0602	3/8 X 1/8	0.04	0.79	0.71
K614-0604	3/8 X 1/4	0.03	0.79	0.71
K614-0802	1/2 X 1/8	0.10	0.94	1.02
K614-0804	1/2 X 1/4	0.09	0.94	1.02
K614-0806	1/2 X 3/8	0.07	0.94	1.02
K614-1202	3/4 X 1/8	0.16	1.02	1.18
K614-1204	3/4 X 1/4	0.16	1.02	1.18
K614-1206	3/4 X 3/8	0.14	1.02	1.18
K614-1208	3/4 X 1/2	0.12	1.02	1.18
K614-1602	1 X 1/8	0.20	1.14	1.38
K614-1604	1 X 1/4	0.24	1.14	1.38
K614-1606	1 X 3/8	0.22	1.14	1.38
K614-1608	1 X 1/2	0.21	1.14	1.38
K614-1612	1 X 3/4	0.17	1.14	1.38
K614-2002	1-1/4 X 1/8	0.43	1.22	1.77
K614-2004	1-1/4 X 1/4	0.43	1.22	1.77
K614-2006	1-1/4 X 3/8	0.41	1.22	1.77
K614-2008	1-1/4 X 1/2	0.42	1.22	1.77
K614-2012	1-1/4 X 3/4	0.38	1.22	1.77
K614-2016	1-1/4 X 1	0.31	1.22	1.77
K614-2404	1-1/2 X 1/4	0.68	1.22	2.05
K614-2406	1-1/2 X 3/8	0.68	1.22	2.05
K614-2408	1-1/2 X 1/2	0.70	1.22	2.05
K614-2412	1-1/2 X 3/4	0.67	1.22	2.05



**MERIT
BRASS**

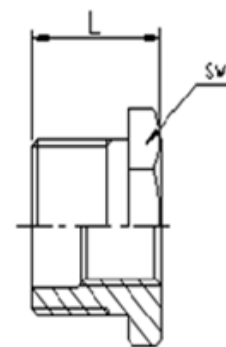
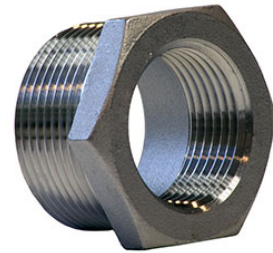
DIRECTING THE FLOW OF *Quality*

DIMENSIONAL SPECIFICATIONS

STAINLESS STEEL ISO PATTERN FITTINGS 150 LB.

HEX HEAD BUSHING CONTINUED (316)

Part #	Size (IN.)	Approx. Net WT. (LB.)	L	SW
K614-2416	1-1/2 X 1	0.60	1.22	2.05
K614-2420	1-1/2 X 1-1/4	0.45	1.22	2.05
K614-3204	2 X 1/4	0.99	1.38	2.48
K614-3206	2 X 3/8	0.95	1.38	2.48
K614-3208	2 X 1/2	0.90	1.38	2.48
K614-3212	2 X 3/4	0.82	1.38	2.48
K614-3216	2 X 1	0.77	1.38	2.48
K614-3220	2 X 1-1/4	0.79	1.38	2.48
K614-3224	2 X 1-1/2	0.66	1.38	2.48
K614-4008	2-1/2 X 1/2	1.73	1.57	3.19
K614-4012	2-1/2 X 3/4	1.66	1.57	3.19
K614-4016	2-1/2 X 1	1.66	1.57	3.19
K614-4020	2-1/2 X 1-1/4	1.51	1.57	3.19
K614-4024	2-1/2 X 1-1/2	1.43	1.57	3.19
K614-4032	2-1/2 X 2	1.20	1.57	3.19
K614-4816	3 X 1	2.76	1.73	3.72
K614-4820	3 X 1-1/4	2.52	1.73	3.72
K614-4824	3 X 1-1/2	2.47	1.73	3.74
K614-4832	3 X 2	2.26	1.73	3.74
K614-4840	3 X 2-1/2	1.85	1.73	3.74
K614-6420	4 X 1-1/4	4.38	2.01	4.72
K614-6424	4 X 1-1/2	4.08	2.01	4.72
K614-6432	4 X 2	4.34	2.01	4.72
K614-6440	4 X 2-1/2	3.59	2.01	4.72
K614-6448	4 X 3	3.29	2.01	4.72



**MERIT
BRASS**

DIRECTING THE FLOW OF *Quality*