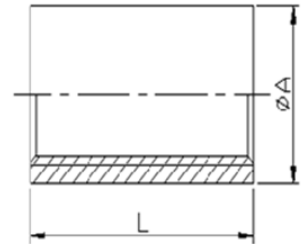


# DIMENSIONAL SPECIFICATIONS

STAINLESS STEEL ISO PATTERN FITTINGS 150 LB.

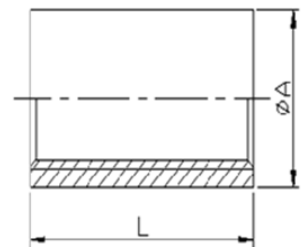
## HEAVY PATTERN FULL COUPLING (304)

Part #	Size (IN.)	Approx. Net WT. (LB.)	A	L
K411-02	1/8	0.06	0.62	1.01
K411-04	1/4	0.10	0.78	1.10
K411-06	3/8	0.12	0.89	1.19
K411-08	1/2	0.18	1.11	1.38
K411-12	3/4	0.32	1.37	1.59
K411-16	1	0.49	1.65	1.72
K411-20	1-1/4	0.53	1.93	1.97
K411-24	1-1/2	0.87	2.24	2.23
K411-32	2	1.53	2.80	2.56
K411-40	2-1/2	2.65	3.40	2.91
K411-48	3	4.41	4.16	3.23
K411-64	4	6.39	5.07	3.72



## HEAVY PATTERN FULL COUPLING (316)

Part #	Size (IN.)	Approx. Net WT. (LB.)	A	L
K611-02	1/8	0.06	0.62	1.01
K611-04	1/4	0.10	0.78	1.10
K611-06	3/8	0.12	0.89	1.19
K611-08	1/2	0.18	1.11	1.38
K611-12	3/4	0.32	1.37	1.59
K611-16	1	0.49	1.65	1.72
K611-20	1-1/4	0.53	1.93	1.97
K611-24	1-1/2	0.87	2.24	2.23
K611-32	2	1.53	2.80	2.56
K611-40	2-1/2	2.65	3.40	2.91
K611-48	3	4.41	4.16	3.23
K611-64	4	6.39	5.07	3.72



**MERIT  
BRASS**

DIRECTING THE FLOW OF *Quality*