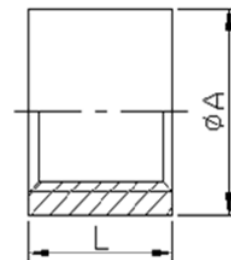
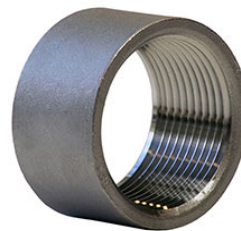


DIMENSIONAL SPECIFICATIONS

STAINLESS STEEL ISO PATTERN FITTINGS 150 LB.

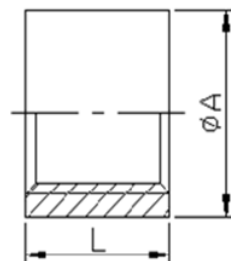
HEAVY PATTERN HALF COUPLING (304)

Part #	Size (IN.)	Approx. Net WT. (LB.)	A	L
K411H-02	1/8	0.02	0.62	0.50
K411H-04	1/4	0.04	0.79	0.57
K411H-06	3/8	0.05	0.91	0.59
K411H-08	1/2	0.09	1.09	0.70
K411H-12	3/4	0.15	1.35	0.84
K411H-16	1	0.27	1.66	0.88
K411H-20	1-1/4	0.28	1.91	1.01
K411H-24	1-1/2	0.42	2.22	1.13
K411H-32	2	0.75	2.78	1.30
K411H-40	2-1/2	1.25	3.39	1.49
K411H-48	3	2.21	4.13	1.65
K411H-64	4	3.50	5.20	1.91
K411H-96	6	3.50	7.11	1.73



HEAVY PATTERN HALF COUPLING (316)

Part #	Size (IN.)	Approx. Net WT. (LB.)	A	L
K611H-02	1/8	0.02	0.62	0.50
K611H-04	1/4	0.04	0.79	0.57
K611H-06	3/8	0.05	0.91	0.59
K611H-08	1/2	0.09	1.09	0.70
K611H-12	3/4	0.15	1.35	0.84
K611H-16	1	0.27	1.66	0.88
K611H-20	1-1/4	0.28	1.91	1.01
K611H-24	1-1/2	0.42	2.22	1.13
K611H-32	2	0.75	2.78	1.30
K611H-40	2-1/2	1.25	3.39	1.49
K611H-48	3	2.21	4.13	1.65
K611H-64	4	3.50	5.20	1.91
K611H-96	6	3.50	7.11	1.73



**MERIT
BRASS**

DIRECTING THE FLOW OF *Quality*