



Mueller Streamline Co. Headquarters

150 Schilling Blvd
Suite 201
Collierville, Tennessee 38017
United States
Phone: 901 753 3200

Mueller Streamline Co. International

525 Okeechobee Blvd
Suite 860
West Palm Beach, FL 33401
United States
Phone: 561 273 8300

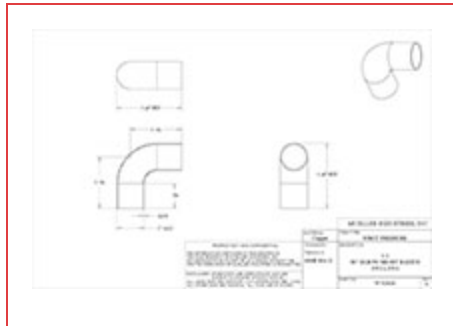
[All Categories](#) > [Copper Pressure Fittings](#) > [Elbows](#) > [Mueller Streamline® 90° Elbow Short Radius Fitting \(FTG x FTG\)](#) > Item # W 02626

ITEM # W 02626, 90° ELBOW SHORT RADIUS FITTING, FTG X FTG, 1/2"

Streamline® Copper Solder-Joint Fittings for supply/pressurized systems have been the leading brand of copper fittings for over 80 years. Available in both wrought copper and cast bronze, our product selection has grown to become the most extensive in the industry. We are the acknowledged experts at engineering and manufacturing precision solder-joint copper fittings. Quality, consistency and reliability have made the Streamline® brand trusted and specified all around the world.

For use in above-ground potable water supply systems
Constructed of high-grade copper or bronze materials
Made to applicable ASME standards B16.15, B16.18, B16.22, B16.24, B16.50, B1.20.1
Wrot fittings meet NSF 61G

- [less](#)



[Specifications](#) | [Dimensions](#) | [Details](#)

Specifications

Weight	0.05 lb
Material	WROT COPPER
Operating Temperature	CDA-Copper-Fitting-Pressue-Temp-Ratings
Operating Pressure	CDA-Copper-Fitting-Pressue-Temp-Ratings
End Type	FTG - Fitting (Male Solder)
End Size	1/2 in
Second End Type	FTG - Fitting (Male Solder)
Second End Size	1/2 in 1/2

Standards

NSF 61G
ASME B16.15
ASME B16.18
ASME B16.22
ASME B16.24
ASME B16.50
ASME B1.20.1

Dimensions**Overall Length**

1.47 in

Overall Height

1.47 in

Overall Width

0.62 in

Details**Style**

WE-506

Qty Pcs / Bag

50

Master Qty Pcs / Box

500

Mueller Description 1

1/2 FTG X FTG SR 90 ELL

Mueller Description 2

5/8OD FTG X FTG 90 ELL