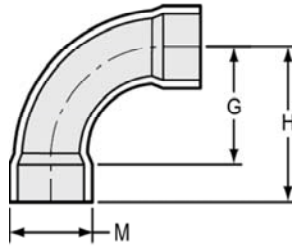




Schedule 40 Fittings Technical
Schedule 40 Fittings Dimensions & Information

90° EII - Long Sweep

Socket x Socket

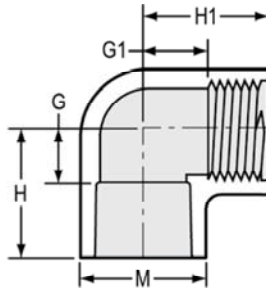


Part Number	Size	G	H	M	Approx. Wt. (Lbs.)
406-025LSF*	2-1/2	5- 7/16	7- 7/16	3- 1/4	1.11
406-030LSF*	3	7	9	3-15/16	1.59
406-040LSF*	4	9	11-1/4	5	2.77
406-060LSF*	6	13	16- 1/4	7- 3/16	6.96
406-080LSF*	8	22- 7/16	26-11/16	9- 1/4	18.94
406-100LSF*	10	27	32-1/4	11-1/2	31.27

* Fabricated

90° EII

Socket x Fipt



Part Number	Size	G	G1	H	H1	M	Approx. Wt. (Lbs.)
407-005	1/2	1/2	1/2	1- 1/4	1- 1/4	1- 3/32	.05
407-007	3/4	9/16	9/16	1- 9/16	1- 9/32	1- 5/16	.08
407-010	1	11/16	11/16	1-13/16	1- 9/16	1- 5/8	.14
407-012	1-1/4	7/8	1-1/8	2- 1/8	2-1/16	2- 1/16	.25
407-015	1-1/2	1	1- 1/16	2- 5/16	2	2- 1/4	.25
407-020	2	1- 3/16	1-5/16	2-11/32	2-11/32	2-23/32	.46
407-025	2-1/2	1- 1/2	1- 1/2	3- 1/2	3- 1/16	3- 5/16	.93
407-030	3	1-13/16	1-29/32	3-11/16	3-5/16	4	1.15
407-040	4	2- 5/16	2-15/32	4-11/32	3-7/8	5- 1/16	1.85