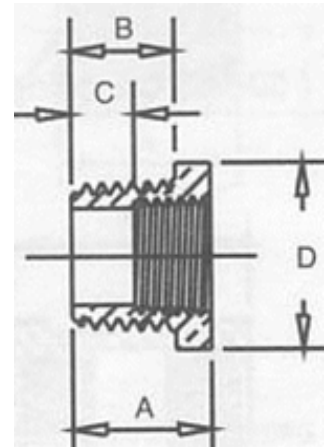


DIMENSIONAL SPECIFICATIONS

LEADED DOMESTIC BRASS FITTINGS** 125 LB.

HEX BUSHING

Part #	Size (IN.)	Approx. Net WT. (LB.)	A	B	C	D
114-0802	1/2 X 1/8	0.08	0.75	0.56	0.50	0.88
114-0804	1/2 X 1/4	0.10	0.75	0.56	0.43	0.88
114-0806	1/2 X 3/8	0.06	0.75	0.56	0.34	0.88
114-1202	3/4 X 1/8	0.15	0.88	0.63	0.25	1.16
114-1204	3/4 X 1/4	0.15	0.85	0.63	0.53	1.16
114-1206	3/4 X 3/8	0.14	0.85	0.63	0.49	1.16
114-1208	3/4 X 1/2	0.11	0.85	0.63	0.32	1.16
114-1602	1 X 1/8	0.25	1.06	0.75	0.75	1.44
114-1604	1 X 1/4	0.25	1.05	0.75	0.73	1.44
114-1606	1 X 3/8	0.25	1.05	0.75	0.69	1.13
114-1608	1 X 1/2	0.25	1.00	0.75	0.57	1.13
114-1612	1 X 3/4	0.19	1.00	0.75	0.50	1.13
114-2006	1-1/4 X 3/8	0.40	1.16	0.81	0.78	1.13
114-2008	1-1/4 X 1/2	0.40	1.14	0.80	0.71	1.34
114-2016	1-1/4 X 1	0.30	1.08	0.80	0.47	1.78
114-2406	1-1/2 X 3/8	0.50	1.14	0.81	0.57	1.78



NOTE: Bushings reducing to pipe sizes smaller than given are bushed from the smallest reduction appearing in the table.

**⚠️WARNING: This product can expose you to Lead, which is known to the State of California to cause cancer and birth defects or other reproductive harm. For more information go to www.P65Warnings.ca.gov. Leaded product is not for use in potable water.

MERIT BRASS

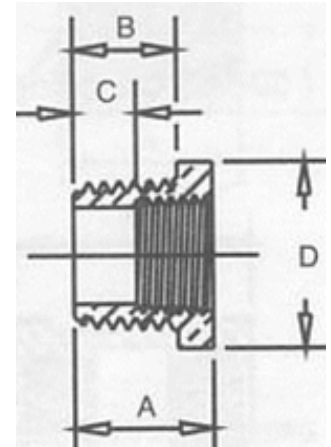
DIRECTING THE FLOW OF *Quality*

DIMENSIONAL SPECIFICATIONS

LEADED DOMESTIC BRASS FITTINGS** 125 LB.

HEX BUSHING CONTINUED

Part #	Size (IN.)	Approx. Net WT. (LB.)	A	B	C	D
114-2412	1-1/2 X 3/4	0.50	1.20	0.83	0.70	1.63
114-2416	1-1/2 X 1	0.45	1.14	0.83	0.56	2.00
114-2420	1-1/2 X 1-1/4	0.35	1.14	0.83	0.43	2.00
114-3204	2 X 1/4	1.10	1.25	0.25	0.73	2.38
114-3208	2 X 1/2	1.00	1.31	0.88	0.88	1.34
114-3212	2 X 3/4	0.95	1.31	0.88	0.81	1.63
114-3216	2 X 1	0.77	1.36	0.91	0.78	1.96
114-3220	2 X 1-1/4	0.75	1.22	0.88	0.55	2.50
114-3224	2 X 1-1/2	0.65	1.22	0.88	0.52	2.50
114-4016	2-1/2 X 1	1.45	1.53	1.09	0.94	1.97
114-4020	2-1/2 X 1-1/4	1.10	1.53	1.09	0.84	2.97
114-4032	2-1/2 X 2	1.15	1.44	1.07	0.69	2.41
114-4816	3 X 1	1.95	1.63	1.13	1.03	3.50
114-4820	3 X 1-1/4	1.75	1.63	1.13	0.94	3.50
114-4824	3 X 1-1/2	1.55	1.63	1.13	0.91	3.50
114-4832	3 X 2	1.65	1.61	1.13	0.86	3.50
114-4840	3 X 2-1/2	1.80	1.53	1.13	0.61	3.88



NOTE: Bushings reducing to pipe sizes smaller than given are bushed from the smallest reduction appearing in the table.

**▲WARNING: This product can expose you to Lead, which is known to the State of California to cause cancer and birth defects or other reproductive harm. For more information go to www.P65Warnings.ca.gov. Leaded product is not for use in potable water.

MERIT BRASS

DIRECTING THE FLOW OF *Quality*