

# Fig. 104

## Adjustable Swivel Ring, Split Ring Type

**Size Range:** 3/4" through 8"

**Material:** Malleable iron, carbon steel

**Finish:** Plain or Galvanized

**Service:** Recommended for suspension of non-insulated **stationary** pipe lines.

**Maximum Temperature:** 450° F

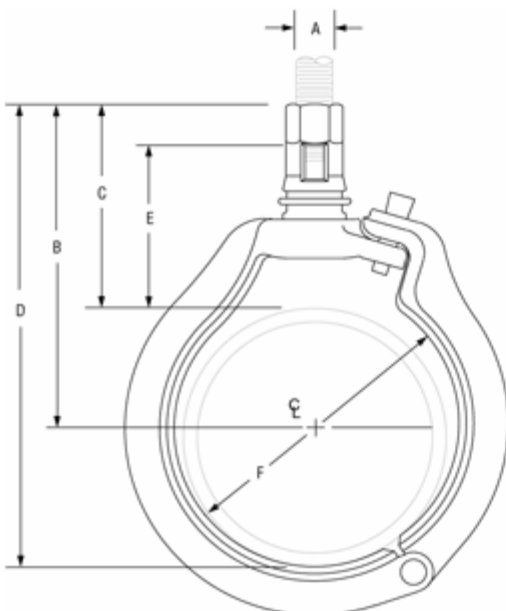
**Approvals:** Complies with Federal Specification A-A-1192A (Type 6)

WW-H-171-E (Type 6), ANSI/MSS SP-69 and MSS SP-58 (Type 16).

**Features:**

- Labor-saving features in installation completely outweigh slight additional cost.
- Hanger may be installed prior to suspension of pipe.
- Off-center hinge provides seating for pipe during installation.
- Wedge-type locking pin is inseparably cast into hinged section, sizes 2 1/2" and larger.
- Adjustable swivel ring is self-locking; prevents loosening due to vibration; maintains proper pitch of pipe.
- Wire retaining ring prevents separation of swivel shank from pipe ring before installation.

**Ordering:** Specify pipe size, figure number, name and finish.



**FIG. 104: LOADS (LBS) • WEIGHT (LBS) • DIMENSIONS (IN)**

Pipe Size	Max Load	Weight	Rod Size A	B	C	D	E	Inside Dia. of Ring - F		
3/4	300	0.31	3/8	2 7/8	2 3/8	3 7/16	1 15/16	1 3/16		
1		0.32			2 1/4	3 3/8	1 3/4	1 7/16		
1 1/4		0.34		3	2 3/8	3 3/8	1 11/16	1 13/16		
1 1/2		0.41				3 1/8		4 1/8	2 1/16	
2		0.48		500	1/2	3 1/2	2 5/8	4 11/16	1 13/16	2 1/2
2 1/2	0.58	3 15/16	2 1/2			5 3/8	1 1/8	3		
3	1.00	4 3/8	2 5/8			6 1/8	2	3 3/4		
4	1.70	900	5/8			5 13/16	3 3/8	8 1/8	2 3/8	4 13/16
5	2.50					6 3/8	3 3/8	9 3/8	2 15/16	5 15/16
6	1,300	3.80	3/4	7 5/8	4 1/8	10 15/16	3 1/2	7 1/16		
8	1,800	6.10	7/8	9 1/8	4 7/8	13 1/2	3 3/8	9 1/16		