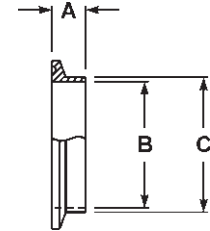
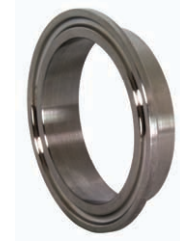


Clamp Ferrules

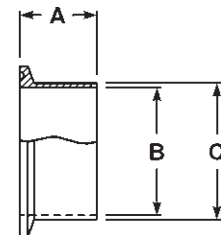
Short Weld Ferrules - 14WMP

Tube OD	A	B	C	304 Stainless Steel Part Number	316L Stainless Steel Part Number
½"	.500	.370	.500	14WMP-G50	14WMP-R50
¾"	.500	.620	.750	14WMP-G75	14WMP-R75
1"	.500	.870	1.000	14WMP-G100	14WMP-R100
1½"	.500	1.370	1.500	14WMP-G150	14WMP-R150
2"	.500	1.870	2.000	14WMP-G200	14WMP-R200
2½"	.500	2.370	2.500	14WMP-G250	14WMP-R250
3"	.500	2.870	3.000	14WMP-G300	14WMP-R300
4"	.625	3.834	4.000	14WMP-G400	14WMP-R400
5"	.750	4.782	5.000	14WMP-G500	14WMP-R500
6"	.875	5.782	6.000	14WMP-G600	14WMP-R600
8"	.875	7.760	8.000	14WMP-G800	14WMP-R800
10"	.875	9.782	10.000	14WMP-G1000	14WMP-R1000
12"	.875	11.760	12.000	14WMP-G1200	14WMP-R1200



Long Weld Ferrules - L14AM7

Tube OD	A	B	C	304 Stainless Steel Part Number	316L Stainless Steel Part Number
½"	1.125	.370	.500	L14AM7-G50	L14AM7-R50
¾"	1.125	.620	.750	L14AM7-G75	L14AM7-R75
1"	1.125	.870	1.000	L14AM7-G100	L14AM7-R100
1½"	1.125	1.370	1.500	L14AM7-G150	L14AM7-R150
2"	1.125	1.870	2.000	L14AM7-G200	L14AM7-R200
2½"	1.125	2.370	2.500	L14AM7-G250	L14AM7-R250
3"	1.125	2.870	3.000	L14AM7-G300	L14AM7-R300
4"	1.125	3.834	4.000	L14AM7-G400	L14AM7-R400
5"	1.125	4.782	5.000	L14AM7-G500	L14AM7-R500
6"	1.500	5.782	6.000	L14AM7-G600	L14AM7-R600
8"	1.500	7.760	8.000	L14AM7-G800	L14AM7-R800
10"	1.750	9.782	10.000	L14AM7-G1000	L14AM7-R1000
12"	1.750	11.760	12.000	L14AM7-G1200	L14AM7-R1200

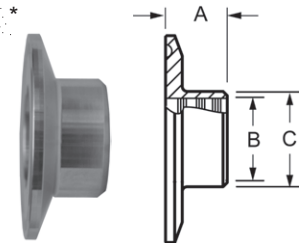


Reducing Roll-on Ferrules - B31RMP

- for expanding

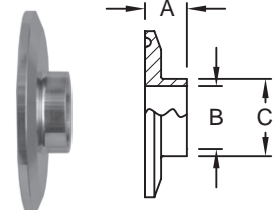
Clamp End	Tube OD	A	B	C	304 Stainless Steel Part Number
1½"	1"	.750	1.007	1.160	B31RMP-G150100
2"	1"	.750	1.007	1.160	B31RMP-G200100
2"	1½"	1.125	1.507	1.676	B31RMP-G200150

* for use when modifying or repairing existing on-site farm milk handling systems

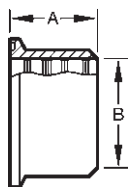


Reducing Ferrules - B31WMP

Tube OD	A	B	C	304 Stainless Steel Part Number	316L Stainless Steel Part Number
2" x 1"	.500	.870	1.000	B31WMP-G200100	B31WMP-R200100
2½" x 1½"	.500	1.370	1.500	B31WMP-G250150	B31WMP-R250150
2½" x 2"	.500	1.870	2.000	B31WMP-G250200	B31WMP-R250200
3" x 2"	.500	1.870	2.000	B31WMP-G300200	B31WMP-R300200
3" x 2½"	.500	2.370	2.500	B31WMP-G300250	B31WMP-R300250
4" x 3"	.625	2.870	3.000	B31WMP-G400300	B31WMP-R400300



Clamp Ferrules



3 * **Roll-On Ferrules - 14RMP**

- for expanding

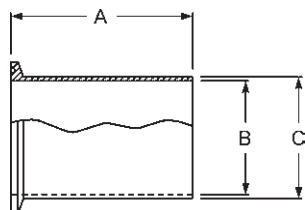
Tube OD	A	B	304 Stainless Steel Part Number	316L Stainless Steel Part Number
1"	.750	1.005	14RMP-G100	14RMP-R100
1½"	1.125	1.505	14RMP-G150	14RMP-R150
2"	1.312	2.005	14RMP-G200	14RMP-R200
2½"	1.375	2.505	14RMP-G250	14RMP-R250
3"	1.437	3.005	14RMP-G300	14RMP-R300
4"	1.500	4.005	14RMP-G400	14RMP-R400
6"	2.000	6.005	14RMP-G600	---

* for use when modifying or repairing existing on-site farm milk handling systems

3 **Automatic Weld Ferrules - TL14AM7**

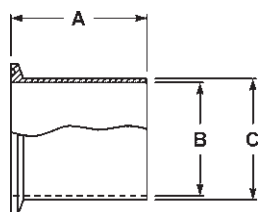
- meets ASME BPE-2009 specifications

Tube OD	A	B	C	316L Stainless Steel Part Number
½"	1.750	.370	.500	TL14AM7-50PL
¾"	1.750	.620	.750	TL14AM7-75PL
1"	1.750	.870	1.000	TL14AM7-100PL
1½"	1.750	1.370	1.500	TL14AM7-150PL
2"	2.250	1.870	2.000	TL14AM7-200PL
2½"	2.250	2.370	2.500	TL14AM7-250PL
3"	2.250	2.870	3.000	TL14AM7-300PL
4"	2.250	3.834	4.000	TL14AM7-400PL
6"	3.000	5.782	6.000	New TL14AM7-600PL



3 **Tank Ferrules (light duty) - 14WLMP**

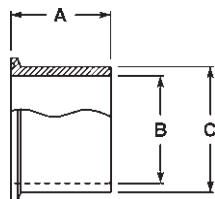
Tube OD	A	B	C	304 Stainless Steel Part Number	316L Stainless Steel Part Number
1"	3.000	.870	1.000	14WLMP-G100	14WLMP-R100
1½"	3.000	1.370	1.500	14WLMP-G150	14WLMP-R150
2"	3.000	1.870	2.000	14WLMP-G200	14WLMP-R200
2½"	3.000	2.370	2.500	14WLMP-G250	14WLMP-R250
3"	4.000	2.870	3.000	14WLMP-G300	14WLMP-R300
4"	4.000	3.834	4.000	14WLMP-G400	14WLMP-R400
6"	6.000	5.782	6.000	14WLMP-G600	14WLMP-R600
8"	6.000	7.760	8.000	---	14WLMP-R800
10"	6.000	9.782	10.000	---	14WLMP-R1000
12"	6.000	11.760	12.000	---	14WLMP-R1200



3 **Tank Ferrules (heavy duty) - 14MPW**

- certified ASME materials

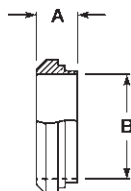
Tube OD	A	B	C	316L Stainless Steel Part Number
½"	1.625	.321	.502	14MPW-R50
¾"	1.625	.574	.750	14MPW-R75
1"	1.625	.870	1.160	14MPW-R100
1½"	1.625	1.370	1.676	14MPW-R150
2"	1.750	1.870	2.192	14MPW-R200
2½"	1.750	2.370	2.708	14MPW-R250
3"	1.813	2.870	3.224	14MPW-R300
4"	2.125	3.834	4.256	14MPW-R400
6"	2.500	5.758	6.192	14MPW-R600
8"	2.500	7.758	8.192	14MPW-R800



Bevel Seat Ferrules

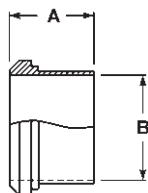
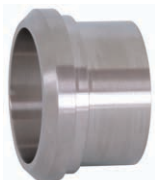
C

Bevel Seat



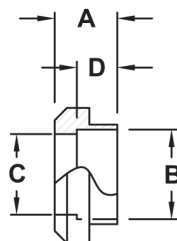
3 Short Plain Bevel Seat Weld Ferrules - 14PRF

Tube OD	A	B	304 Stainless Steel Part Number	316L Stainless Steel Part Number
1"	.718	.870	14PRF-G100	14PRF-R100
1½"	.718	1.370	14PRF-G150	14PRF-R150
2"	.750	1.870	14PRF-G200	14PRF-R200
2½"	.875	2.370	14PRF-G250	14PRF-R250
3"	.906	2.870	14PRF-G300	14PRF-R300
4"	1.031	3.834	14PRF-G400	14PRF-R400



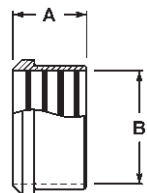
3 Long Plain Bevel Seat Weld Ferrules - 14A

Tube OD	A	B	304 Stainless Steel Part Number	316L Stainless Steel Part Number
1"	1.375	.870	14A-G100	14A-R100
1½"	1.500	1.370	14A-G150	14A-R150
2"	1.500	1.870	14A-G200	14A-R200
2½"	1.750	2.370	14A-G250	14A-R250
3"	1.750	2.870	14A-G300	14A-R300
4"	1.750	3.834	14A-G400	14A-R400



Recessed Plain Bevel Seat Weld Ferrules - 14

Tube OD	A	B	C	D	304 Stainless Steel Part Number
1"	.750	1.000	.870	.500	14-G100
1½"	.875	1.500	1.370	.625	14-G150
2"	.969	2.000	1.870	.688	14-G200
2½"	1.062	2.500	2.370	.750	14-G250
3"	1.125	3.000	2.870	.813	14-G300
4"	1.250	4.000	3.834	.938	14-G400



3* Recessless Plain Bevel Seat Ferrules - 14R

- for expanding

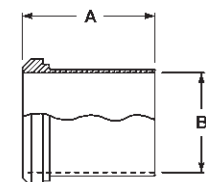
Tube OD	A	B	304 Stainless Steel Part Number
1"	.750	1.000	14R-G100
1½"	1.125	1.500	14R-G150
2"	1.312	2.000	14R-G200
2½"	1.375	2.500	14R-G250
3"	1.437	3.000	14R-G300
4"	1.500	4.000	14R-G400

* for use when modifying or repairing existing on-site farm milk handling systems

Bevel Seat Ferrules

Light Wall Tank Plain Bevel Seat Ferrules - 14WL

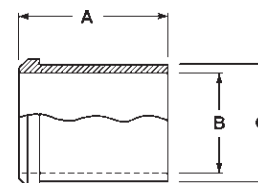
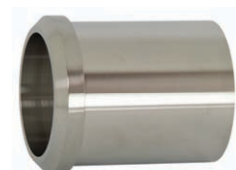
Tube OD	A	B	304 Stainless Steel Part Number
1"	2.000	.870	14WL-G100
1½"	2.250	1.370	14WL-G150
2"	2.500	1.870	14WL-G200
2½"	2.750	2.370	14WL-G250
3"	3.000	2.870	14WL-G300
4"	4.000	3.834	14WL-G400



C
Bevel Seat

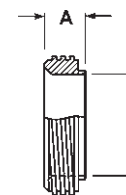
Heavy Wall Tank Plain Bevel Seat Ferrules - 14W

Tube OD	A	B	C	304 Stainless Steel Part Number
1"	2.375	.870	1.160	14W-G100
1½"	2.531	1.370	1.676	14W-G150
2"	2.781	1.870	2.192	14W-G200
2½"	3.062	2.370	2.708	14W-G250
3"	3.531	2.870	3.224	14W-G300
4"	4.312	3.834	4.256	14W-G400



Short Threaded Bevel Seat Weld Ferrules - 15TRF

Tube OD	A	B	304 Stainless Steel Part Number	316L Stainless Steel Part Number
1"	.718	.870	15TRF-G100	15TRF-R100
1½"	.718	1.370	15TRF-G150	15TRF-R150
2"	.750	1.870	15TRF-G200	15TRF-R200
2½"	.875	2.370	15TRF-G250	15TRF-R250
3"	.906	2.870	15TRF-G300	15TRF-R300
4"	1.031	3.834	15TRF-G400	15TRF-R400



Long Threaded Bevel Seat Weld Ferrules - 15A

Tube OD	A	B	304 Stainless Steel Part Number	316L Stainless Steel Part Number
1"	1.375	.870	15A-G100	15A-R100
1½"	1.500	1.370	15A-G150	15A-R150
2"	1.500	1.870	15A-G200	15A-R200
2½"	1.750	2.370	15A-G250	15A-R250
3"	1.750	2.870	15A-G300	15A-R300
4"	1.750	3.834	15A-G400	15A-R400

