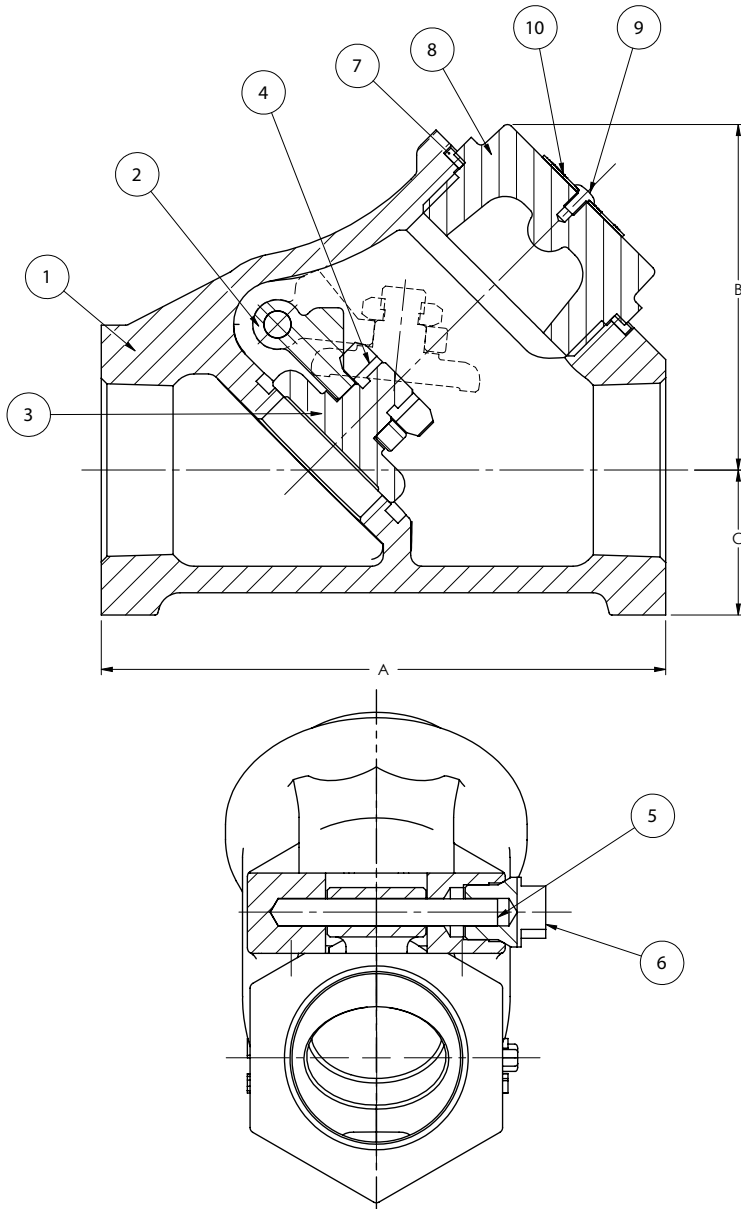


## Class 300 • Threaded Cap • Y-Pattern • All Iron • Threaded

### 346 1/2 Check Valve



### Materials of Construction

No.	Description	Material	ASTM
1	Body	Ductile Iron	A536, 65-45-12
2	Hinge	Ductile Iron	A536, 65-45-12
3	Disc	Ductile Iron	A536, 65-45-12
4	Nut	Steel	A194 2H
5	Hinge Pin	Stainless Steel	AISI 410
6	Plug	Stainless Steel	AISI 304
7	Gasket	Aramid Fiber Blend with Nitrile Binder	
8	Bonnet Cap	Ductile Iron	A536, 65-45-12
9	Rivet	Steel	
10	ID Tag	Anodized Aluminum B&S Gauge #24	

### Industry Standards

MSS SP-71

ASME B1.20.1

Temperature Valve Ratings		Working Pressures, Non-shock, PSI	
°F	°C	PSI	kPa
-20 to 100	-30 to 37	640	4412
200	93	600	4136
300	149	565	3895
400	205	525	3619
500	260	495	3412
600	315	465	3206
650	343	450	3102

### Dimensions and Weights

Inches (millimeters) - Pounds (kilograms)

Valve Size	Dimensions			WT
	A	B	C	
1/2	2.75	1.69	1.06	1.34
	(70)	(43)	(27)	(.61)
3/4	3.27	1.90	1.06	1.67
	(83)	(48)	(27)	(.76)
1	4.06	2.45	1.06	2.50
	(103)	(62)	(27)	(1.11)
1 1/4	4.75	2.85	1.30	3.52
	(120)	(73)	(32)	(1.60)
1 1/2	5.40	3.29	1.40	5.42
	(137)	(84)	(36)	(2.46)
2	6.62	4.28	1.70	9.19
	(168)	(109)	(43)	(4.17)