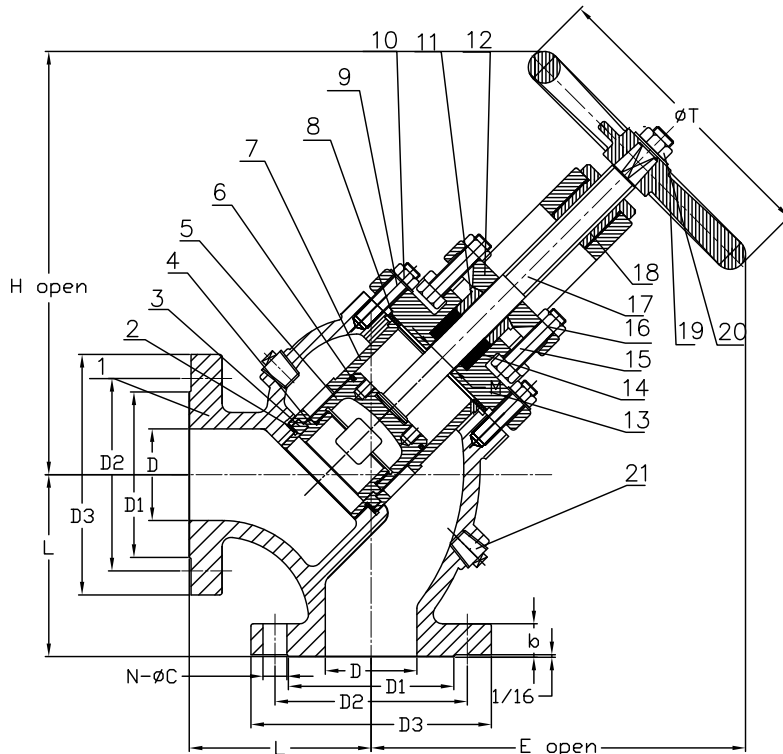


30E Angle Stop Check Valve



Materials of Construction

| No. | Description | Material | ASTM |
|-----|------------------|--------------------------------|---------|
| 1 | Body | Ductile Iron | A536 |
| 2 | Body Seat Gasket | Graphite | |
| 3 | Body Seat Ring | Cast Bronze | B62 |
| 4 | Disc Seal | Cast Bronze | B62 |
| 5 | Disc | Ductile Iron | A536 |
| 6 | Piston Ring | Alloy Cast Iron | |
| 7 | Disc Guide | Ductile Iron | A536 |
| 8 | Body Gasket | Graphite | |
| 9 | Bolts | Steel | A193 B7 |
| 10 | Nuts | Steel | A194 2H |
| 11 | Packing Gland | Cast Brass | B62 |
| 12 | Gland Follower | Ductile Iron | A536 |
| 13 | Bonnet | Ductile Iron | A536 |
| 14 | Packing | Die-formed Compressed Graphite | |
| 15 | Bolts | Steel | A193 B7 |
| 16 | Nuts | Steel | A194 2H |
| 17 | Stem | Stainless Steel | 410 |
| 18 | Stem Nut | Cast Brass | B62 |
| 19 | Handwheel | Cast Iron | A126 B |
| 20 | Nut | Steel | A194 2H |
| 21 | Drain Plug | Stainless Steel | 304 |

See pages 23 - 26 for sizing and other Technical Data

NOTE: Contact your CRANE® representative if you wish to have basic flow calculations performed by CRANE® to advise the possible sizes appropriate for your application.

Features:

- Valve designed for steam applications that operate between 100 and 250 psig.
- The Stop-Check feature of this valve requires a minimum of 50 psi pressure differential between piping system and boiler to operate properly.

Dimensions and Weights

Inches (millimeters) - Pounds (kilograms)

| Valve Size | Dimensions | | | | | | | | | | WT | |
|------------|------------|-------|-------|-------|-------|------|-------------|------|----------|----------|-------|-------|
| | D | D1 | D2 | D3 | L | b | N - øC | M | H (Open) | E (Open) | | T |
| 2 1/2 | 2.50 | 4.94 | 5.86 | 7.50 | 5.75 | 1.00 | 8 - ø7/8 | 1.13 | 13.87 | 12.85 | 10.00 | 86 |
| | (64) | (125) | (149) | (191) | (146) | (25) | | (29) | (352) | (326) | (254) | (39) |
| 3 | 3.00 | 5.69 | 6.63 | 8.25 | 6.25 | 1.13 | 8 - ø7/8 | 1.13 | 16.00 | 14.37 | 10.00 | 123 |
| | (76) | (145) | (168) | (210) | (159) | (29) | | (29) | (406) | (364) | (254) | (55) |
| 4 | 4.00 | 6.31 | 7.86 | 10.00 | 7.00 | 1.25 | 8 - ø7/8 | 1.25 | 18.00 | 15.71 | 10.13 | 186 |
| | (102) | (160) | (200) | (254) | (178) | (32) | | (32) | (457) | (399) | (257) | (84) |
| 5 | 5.00 | 8.31 | 9.25 | 11.00 | 7.88 | 1.38 | 8 - ø7/8 | 1.50 | 21.35 | 18.67 | 14.00 | 250 |
| | (127) | (211) | (235) | (279) | (200) | (35) | | (38) | (542) | (474) | (355) | (113) |
| 6 | 6.00 | 9.69 | 10.63 | 12.50 | 8.75 | 1.44 | 12 - ø7/8 | 1.50 | 24.76 | 21.93 | 17.75 | 340 |
| | (152) | (246) | (270) | (318) | (222) | (37) | | (38) | (628) | (557) | (450) | (154) |
| 8 | 8.00 | 11.94 | 13.00 | 15.00 | 10.50 | 1.63 | 12 - ø1 | 1.63 | 32.79 | 28.26 | 20.00 | 640 |
| | (203) | (303) | (330) | (381) | (267) | (41) | | (41) | (832) | (717) | (508) | (291) |
| 10 | 10.00 | 14.06 | 15.25 | 17.50 | 12.25 | 1.88 | 16 - ø1 1/8 | 1.75 | 33.98 | 29.25 | 20.00 | 1025 |
| | (254) | (357) | (387) | (445) | (311) | (48) | | (44) | (863) | (742) | (508) | (465) |