

## Type MFX Fire Extinguisher Gauge



### FEATURES

- Sealed stainless steel case provides a weatherproof, dustproof corrosion-resistant gauge
- High impact-resistant polycarbonate window
- Meets applicable UL specifications
- Mass spectrometer leak tested

Ashcroft® fire extinguisher gauges are mass spectrometer leak tested, thereby ensuring the critical leak integrity needed to prevent loss of extinguishing agent. These high-quality gauges are constructed with a corrosion-resistant stainless steel case and high impact-resistant polycarbonate window. Dial faces can be customized to meet customer requirements. The spiral tube technology used in these gauges offers the necessary accuracy without the complication of gearing, linkages and bearings that are present in a conventional movement gauge.

Ashcroft fire extinguisher gauges are made specifically for portable fire extinguishers, extinguishing systems, industrial and residential use.

### PRODUCT SPECIFICATIONS

<b>Ashcroft® Model No.:</b>	12MFX, 15MFX
<b>Accuracy:</b>	Conforms to applicable UL specs*
<b>Size:</b>	12MFX – 1¼” 15MFX – 1½”
<b>Case:</b>	Stainless steel, sealed
<b>Ring:</b>	None
<b>Window:</b>	High impact-resistant polycarbonate
<b>Dial:</b>	Conforms to applicable UL specs*
<b>Pointer:</b>	Integral with Bourdon tube, brass painted yellow
<b>Bourdon tube:</b>	Beryllium copper, spiral
<b>Movement:</b>	None (direct reading)
<b>Socket:</b>	Brass
<b>Restrictor:</b>	None
<b>Connection:</b>	½ NPT back, standard
<b>Ranges:</b>	Maximum pressure scale from 200 psi to 4000 psi

### OPTIONAL FEATURES

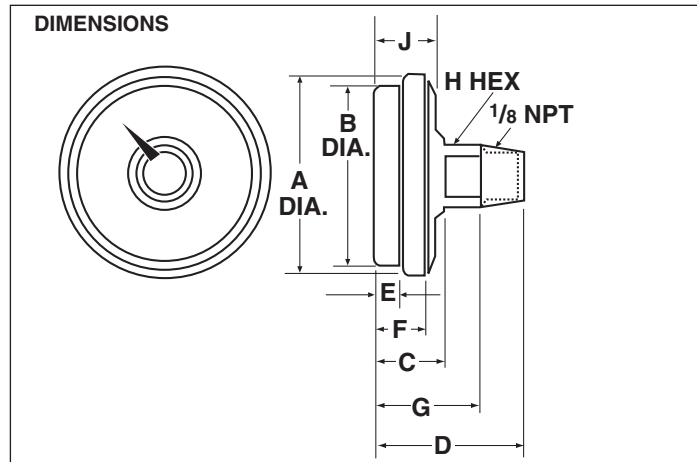
<b>Socket:</b>	½ NPT; throttle plugs, 0.007,” 0.013,” 0.020,” 0.063” orifice
<b>Others:</b>	Customized dials Silicone-filled spiral tube for corrosion protection Special socket configurations

\*Applicable UL specs:  
UL 299, UL 626, UL 1058, UL1093

### HOW TO ORDER (Typical example)

	12	MFX	01B	400	C195	P
<b>Dial Size:</b> 1¼”	_____					
<b>Case Type Number:</b> MFX	_____					
<b>Connection Size/Location:</b> ½ NPT Back	_____					
<b>Range:</b> 400 psi	_____					
<b>Charge Pressure:</b>	_____					
<b>Extinguishing Agent:</b> Dry Chemical (P), Halon 1301 (F), Halon 1211 (H), Water (W), Alternative (A)	_____					

# Type MFX Fire Extinguisher Gauge



MODEL NO. inches (mm)	A	B	C	D		E	F	G	H		J
				1/4 NPT	1/8 NPT				1/4 NPT	1/8 NPT	
12MFX	1.45 (37)	1.25 (32)	0.5 (13)	1.25 (32)	1.06 (27)	0.20 (5)	0.40 (10)	0.71 (18)	9/16 (14)	7/16 (11)	0.43 (11)
15MFX	1.68 (43)	1.48 (37)	0.5 (13)	1.25 (32)	1.06 (27)	0.20 (5)	0.40 (10)	0.71 (18)	9/16 (14)	7/16 (11)	0.43 (11)