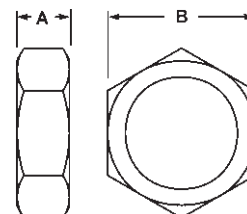
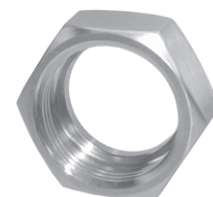


## Bevel Seat Nuts

### Union Hex Nuts - 13H

- 400 PSI maximum

Tube OD	A	B	304 Stainless Steel (CF8) Part Number
1"	.906	1.812	<b>13H-G100</b>
1½"	.968	2.406	<b>13H-G150</b>
2"	1.062	3.000	<b>13H-G200</b>
2½"	1.187	3.594	<b>13H-G250</b>
3"	1.281	4.188	<b>13H-G300</b>
4"	1.500	5.438	<b>13H-G400</b>

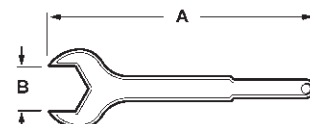


C  
Bevel  
Seat

## Bevel Seat Wrenches

### Single Side Hex Wrenches - 25H

Tube OD	A	B	Weight lbs.	Aluminum Part Number
1"	10.500	1.812	.64	<b>25H-100</b>
1½"	12.000	2.406	.86	<b>25H-150</b>
2"	14.000	3.000	1.76	<b>25H-200</b>
2½"	16.250	3.594	2.40	<b>25H-250</b>
3"	18.500	4.188	3.04	<b>25H-300</b>
4"	19.500	5.438	3.62	<b>25H-400</b>



### Two Sided Hex Wrenches - 25H

Tube OD	A	B	C	Weight lbs.	Aluminum Part Number
1½" x 1"	12.000	2.406	1.812	1.00	<b>25H-150100</b>
2" x 1½"	14.000	3.000	2.406	1.75	<b>25H-200150</b>
2½" x 2"	16.500	3.594	3.000	2.80	<b>25H-250200</b>
3" x 2"	18.000	4.188	3.000	3.20	<b>25H-300200</b>
3" x 2½"	18.000	4.188	3.594	3.70	<b>25H-300250</b>

