

## Type 1132 – 2½", 3½", 4", 4½", & 6" Differential Gauge



- Small convoluted diaphragm actuator
- Stainless steel case
- Ranges from 1 psid-60 psid
- Static pressures up to 1500 psi
- Aluminum<sup>(3)</sup>, brass or stainless steel bodies<sup>(1)</sup>
- Buna-N O-rings (others available)
- Superior magnets for smoother power motion
- Standard or explosion-proof reed switches available
- 5-year warranty

The Type 1132 uses a convoluted-diaphragm design with no migration of the process media. It is recommended for lower differential and high static pressures, up to 1500 psi. Body materials are available in Aluminum, Brass and Stainless Steel, with Buna, Viton or EPDM seals.<sup>(2)</sup>

#### NOTES:

- (1) Not for use with incompatible media.
- (2) Other wetted parts include stainless steel spring, Teflon piston and ceramic magnet.
- (3) Aluminum bodies not to be used with water or corrosive applications.

#### PRODUCT SPECIFICATIONS

|                                  |  |
|----------------------------------|--|
| <b>Model Number:</b>             | 1132   |
| <b>Accuracy (Ascending):</b>     | ±2%  |
| <b>Migration:</b>                | Zero   |
| <b>Ranges:</b>                   | 0-1 psid to 60 psid                                  |
| <b>Maximum Static Pressure:</b>  | 1500 psi (all)                                       |
| <b>Actuator:</b>                 | Convoluted diaphragm                                 |
| <b>Temp. Limit:</b>              | -20/170°F  |
| <b>Case Material:</b>            | Stainless steel                                      |
| <b>Dial Size:</b>                | 2½" (25),<br>3½" (35), 4" (40),<br>4½" (45), 6" (60) |
| <b>Maximum Process Temp.:</b>    | 175°F/80°C   |
| <b>Body Materials:</b>           | Aluminum (F), brass (A),<br>stainless steel (S)      |
| <b>O-Rings/Diaphragm:</b>        | Buna-N   |
| <b>Connection Size (Female):</b> | ¼ NPT (25)   |
| <b>Connection Location:</b>      | In-Line (S), Lower (L), Back (B)                     |
| <b>Window:</b>                   | Glass  |

#### PRODUCT OPTIONS

|                                |     |           |
|--------------------------------|-----|-----------|
| <b>Switches<sup>(1)</sup>:</b> |     | Available |
| <b>¼ NPTF adaptor:</b>         | XGE | Available |
| <b>Front Flange:</b>           | XFF | Available |
| <b>Viton O-Rings:</b>          | XVD | Available |
| <b>EPDM O-Rings:</b>           | XEM | Available |

#### Fill<sup>(3)</sup>:

|          |     |           |
|----------|-----|-----------|
| Glycerin | L   | Standard  |
| Silicone | XGV | Available |

#### Window:

|         |     |           |
|---------|-----|-----------|
| Plastic | XPD | Available |
|---------|-----|-----------|

|                         |     |                          |
|-------------------------|-----|--------------------------|
| <b>Explosion Proof:</b> | XEK | Available <sup>(2)</sup> |
|-------------------------|-----|--------------------------|

#### Pipe Mounting

|                 |     |                |
|-----------------|-----|----------------|
| <b>Bracket:</b> | XTM | In-line (only) |
|-----------------|-----|----------------|

(1) Applicable to switches:

- XV1 – 1 SPST with DIN plug
  - XV2 – 1 SPST with terminal strip
  - XV3 – 2 SPST with DIN plug
  - XV4 – 2 SPST with terminal strip
  - XV5 – 1 SPDT with DIN plug
  - XV6 – 1 SPDT with terminal strip
  - XV7 – 2 SPDT with DIN plug
  - XV8 – 2 SPDT with terminal strip
- Adjustable from 30-100% of range  
Terminal or DIN connected switches are not available with back connection

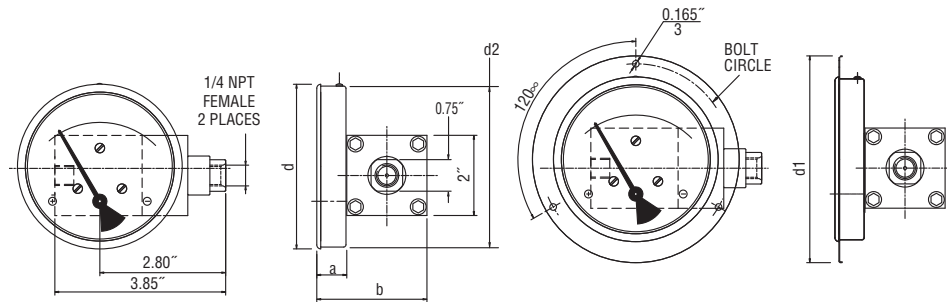
(2) Specify lower or back connection for gauge (not available in-line) and switch type V2, V4, V6, V8

(3) Liquid fill has an effect on accuracy that varies with range and temperature. Liquid filling may be required only in some very severe applications.

#### HOW TO ORDER:

|   |    |      |    |     |     |     |
|---|----|------|----|-----|-----|-----|
| Dial Size: 2½", 3½", 4", 4½", & 6"                    | 25 | 1132 | FD | 25S | XXX | 30# |
| Case Type Number: 1132                                |    |      |    |     |     |     |
| Body Material   |    |      |    |     |     |     |
| Connection Size: ¼ NPTF                               |    |      |    |     |     |     |
| Connection Location: In-line (S), Lower (L), Back (B) |    |      |    |     |     |     |
| Optional Features: see above                          |    |      |    |     |     |     |
| Standard Pressure Range                               |    |      |    |     |     |     |

## Type 1132 – 2½", 3½", 4", 4½", & 6" Differential Gauge



**Type 1132 Dimension Drawing**

| Dial Size | a     | b     | d     | d'    | d <sup>2</sup> | Bolt Circle |
|-----------|-------|-------|-------|-------|----------------|-------------|
| 2.5"      | 0.75" | 2.74" | 2.59" | 3.66" | 2.55"          | 3.26"       |
| 3.5"      | 0.75" | 2.74" | 3.26" | 4.29" | 3.22"          | 3.89"       |
| 4"        | 0.75" | 2.74" | 4.10" | 5.15" | 4.01"          | 4.76"       |
| 4.5"      | 0.75" | 2.74" | 4.71" | 5.74" | 4.60"          | 5.35"       |
| 6"        | 0.75" | 2.74" | 6.07" | 7.12" | 6.00"          | 6.73"       |

**Type 1132 – Standard Ranges**

|                         |         |        |     |       |        |       |       |       |       |       |       |      |       |
|-------------------------|---------|--------|-----|-------|--------|-------|-------|-------|-------|-------|-------|------|-------|
| psi                     | 0-1     |        | 0-5 | 0-8   |        | 0-15  | 0-20  | 0-25  | 0-30  |       | 0-40  | 0-50 | 0-60  |
| in. H <sub>2</sub> O    | 0-25    | 0-100  |     | 0-200 |        | 0-400 | 0-500 |       |       |       |       |      |       |
| kPa                     |         | 0-25   |     | 0-50  | 0-75   | 0-100 |       | 0-160 | 0-200 | 0-250 | 0-300 |      | 0-400 |
| kg/cm <sup>2</sup> -bar | 0-0.075 | 0-0.25 |     | 0-0.5 | 0-0.75 | 0-1   |       | 0-1.6 | 0-2   | 0-2.5 | 0-3   |      | 0-4   |
| mbar                    | 0-75    | 0-250  |     |       |        |       |       |       |       |       |       |      |       |

### Ratings for Both Standard & Explosion Proof Switches:

#### SPST SWITCH

##### Specifications:

Contact Rating  
10 VA ac (rms) or dc (max)  
Switching Current  
0.5 Amp ac (rms) or dc (max)  
Switch Voltage  
100 Vac/Vdc (max)

#### SPDT SWITCH

##### Specifications:

Contact Rating  
3 VA ac (rms) or dc (max)  
Switching Current  
0.3 Amp ac (rms) or dc (max)  
Switch Voltage  
30 Vac/Vdc (max)

### Explosion Proof Switches Information:

Switches and electrical connections are mounted in an explosion-proof enclosure with UL, CSA, Cenelec and FM approval. The enclosure meets Class 1, Groups B, C, D, Class 2 Groups E, F, G, Class 3, NEMA 7 & 9 and IP 66. Two ¾" electrical conduit connections.