

## Type 1379 Duragauge® Pressure Gauge with PLUS!™ Performance Option



- 4½" full-size Bourdon tube
- Patented Duratube™ with as-welded-tube construction controls stress for longer life
- "Round Cap Tip" construction lowers stresses for longer life
- Micrometer adjustable pointer.
- Exclusive Teflon coated 400 series stainless steel rotary movement for longer life
- PLUS!™ Performance Option:
  - Liquid-filled performance in a dry gauge
  - Fights vibration and pulsations without liquid-filled headaches
  - Order as option XLL
- Epoxy-coated system for superior corrosion resistance

Type 1379 Duragauge® pressure gauge is offered in 4½", 6" and 8½" dial sizes. This rugged, solid-front aluminum case gauge is tops in its field. It is available as a weather-proof hermetically sealed or liquid-filled version in 4½" and 6" sizes in pressures to 30,000 psi. Like the 1279, it can be easily field converted from the weatherproof version to either the sealed or liquid-filled version using an optional kit. Ranges 50,000, 80,000 and 100,000 psi are available in 6" hermetically sealed and liquid-filled cases. All cases are coated with black epoxy which will withstand most environmental conditions.

### PRODUCT SPECIFICATIONS

**Model Number:** 1379  
**Accuracy:** ½% full scale (Grade 2A, ASME B40.100)  
**Ranges:** Vacuum – 100,000 psi\*  
**Dial Size:** 4½", 6", 8½" diameter  
**Case Material:** Black, aluminum, solid front  
**Weather Protection:** Dry Case: IP54  
 Liquid filled or hermetically sealed case: IP65  
**Ring:**  
 4½" & 6" Dial: Threaded reinforced black polypropylene  
 8½" Dial: Hinged, aluminum, black epoxy coated  
**Window:** Glass  
**Dial:** Aluminum, white background, black pressure scale.  
**Bourdon Tube and Socket:** C510 Phos. bronze/brass brazed (A)  
 316L SS/Steel (R)  
 316L SS/316L SS (S)  
 K Monel/ Monel (P)  
 Inconel 718 (WW)

**Pointer:** Micrometer adjustable  
**Movement:** Rotary, 400 SS, Teflon® coated pinion gear and segment  
**Connection Size:** ¼", ½" NPT, ¼" high pressure for gauges 30,000 psi and above

**Connection Location:** Lower or back

### PRODUCT OPTIONS

**Fill:** L-Glycerin-Standard  
 XGV-Silicone-Optional  
 XGX-Halocarbon-Optional

**PLUS!™ Performance:** XLL

**Hermetically Sealed, IP65:** H

**Flush Mounting Ring:** X56

**Receiver Gauge:** XPR

**Shatter Proof Glass Window:** XSG

**Acrylic Window:** XPD

**Red Set Hand:** XSH

**Maximum Pointer:** XEP

### STANDARD RANGE TABLE\*\*

Pressure – psi				
Range	Figure interval		Minor Graduation	
0/15	1		0.1	
0/30	5		0.2	
0/60	5		0.5	
0/100	10		1	
0/160	20		2	
0/200	20		2	
0/300	50		2	
0/400	50		5	
0/600	50		5	
0/800	100		10	
0/1000	100		10	
0/1500	200		20	
0/2000	200		20	
0/3000	500		20	
0/5000	500		50	
0/6000	500		50	
0/10,000	1000		100	
0/20,000	2000		200	
0/30,000	5000		200	
0/50,000	5000		500	
0/80,000	10,000		1000	
0/100,000	10,000		1000	

Compound				
Range	Figure Interval		Minor Grads	
	in Hg	psi	in Hg	psi
30" Hg/15 psi	5	3	0.5	0.2
30" Hg/30 psi	10	5	1	0.5
30" Hg/60 psi	10	10	1	1
30" Hg/100 psi	10	10	2	1
30" Hg/150 psi	10	20	5	2
30" Hg/200 psi	30	20	5	2
30" Hg/300 psi	30	50	5	2

Vacuum		
Range	Figure Interval	Minor Grads
30/0 in. Hg	5 in	0.2 in
34/0 ft H <sub>2</sub> O	5 ft	0.5 ft

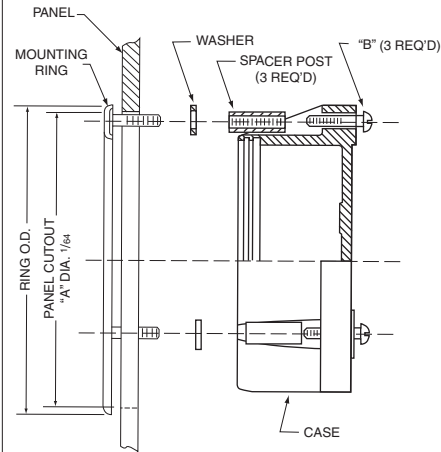
\*50,000, 80,000, & 100,000 psi ranges available with 6" dial size only

\*\*Full standard and metric equivalent range table available on our web site.

## Type 1379 Duragauge® Pressure Gauge with PLUS!™ Performance Option

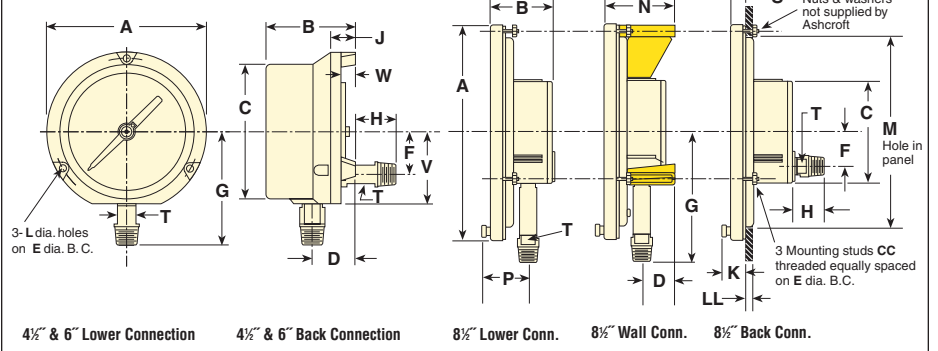
### TYPE 1278M SERIES FLUSH MOUNTING RING

Used to flush mount 4½" & 6" gauge case Type 1379(\*)S. Standard finish is black; optional polished stainless steel finish.



GAUGE SIZE	RING O.D.	"A" DIA.	"B" Size of 3 Screws	"C" Size of Washers
4½	6.000 (152)	5½ (148)	#10-24 x 1½	7/16 x 17/64 x 5/8
6	7.765 (197)	7¾ (189)	¼ x 20 x 1½	7/16 x 17/64 x 5/8

### Dimensions



Dial Size Inches	A	B	C	D	E	F	G	H	J	K	L	M	P	S	T	V	CC	LL	Wgt (lbs)
4½	5 13/16 (148)	3 13/16 (86)	4 7/8 (124)	1 5/8 (41)	5 3/8 (137)	1 1/2 (42)	3 19/16 (100)	7/8 (20)	1 1/16 (27)	—	.218 (6)	—	2 1/4 (54)	—	5/8 (16)	2 5/8 (67)	—	—	2 1/2
6	7 7/16 (192)	3 1/2 (89)	6 5/8 (162)	1 5/8 (41)	7 (178)	1 1/2 (42)	4 1/2 (114)	7/8 (20)	1 1/16 (27)	—	.218 (6)	—	2 1/4 (54)	—	5/8 (16)	2 5/8 (67)	—	1/8-1/2 (3)(13)	3 1/2
8½	10 1/16 (256)	2 1/4 (73)	4 3/4 (121)	1 1/16 (27)	9 5/8 (244)	1 5/8 (41)	6 (152)	1 3/8 (35)	—	1 1/16 (27)	—	9 (228)	—	1 1/16 (17)	—	—	#10-24 (3)(13)	—	4 1/2

Table A - Case selection & mounting

Dial Size (in)	Ordering Code	Case Type	Case: Material Finish	Ring: Style Material Finish	Mounting / Connection
4½, 6, 8½	(45), (60), (85)	1379 (1)	Aluminum, Black epoxy coating	4½", 6" Threaded reinforced polypropylene 8½" Hinged aluminum black epoxy coated	Stem - Lower or back Surface - Lower or back Flush - Back, specify X56 8½" Standard

Table B - Bourdon System Selection

Bourdon Tube & Tip Material <sup>(2)</sup> (all joints TIG welded except code "A")	Socket Material <sup>(2)</sup>	Tube & Socket Code	Case Style Code	NPT Conn. & Code	Conn. Location & Code	Range Selection Limits (psi)
C510 Grade A Phosphor Bronze Tube, Brass Tip, Silver Brazed	Brass	(A)	(S) Solid Front	(04) ½	Lower (L) Back (B)	Vac./1000
316 stainless steel	1018 steel	(R)	(S) Solid Front	(02) ¾		Vac./20,000
316 stainless steel	316 SS	(S)	(S) Solid Front	(OPT)		Vac./20,000
K 500 Monel <sup>(3)</sup>	Monel 400	(P)	(S) Solid Front	—		Vac./30,000
Inconel 718 <sup>(3)</sup>	316 SS	(WW)	(SH) Solid Front	(09) ¾ High Pres.	—	50,000/80,000/ 100,000

### Notes:

- (1) Liquid-fillable or hermetically sealed when kit 101A202-01 (lower) or kit 101A203-01 (back) is ordered.
- (2) For selection of the correct Bourdon system material see the media application table.
- (3) Use on applications where NACE MR-01-75 is specified for selection of the correct Bourdon system material.

### HOW TO ORDER:

From Table A, Dial Size: 4½" : 45    1379    RS\*    04L    XXX    0/2000 psi

From Table A, Case Type Number: 1379

From Table B, Bourdon tube and socket:

From Table B, Connection: ¼ NPT (02), ½ NPT (04), Lower (L), Back (B)

From Optional Features:

From Range Table: 2000 psi

(\*) "S" denotes solid front case design  
If glycerin filled case, substitute "L" instead of "S"