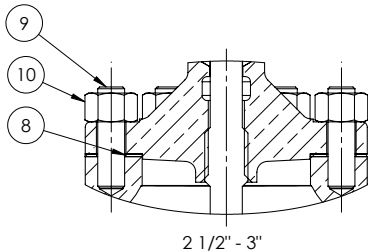
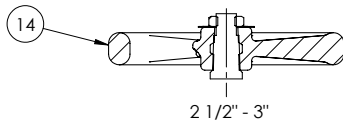
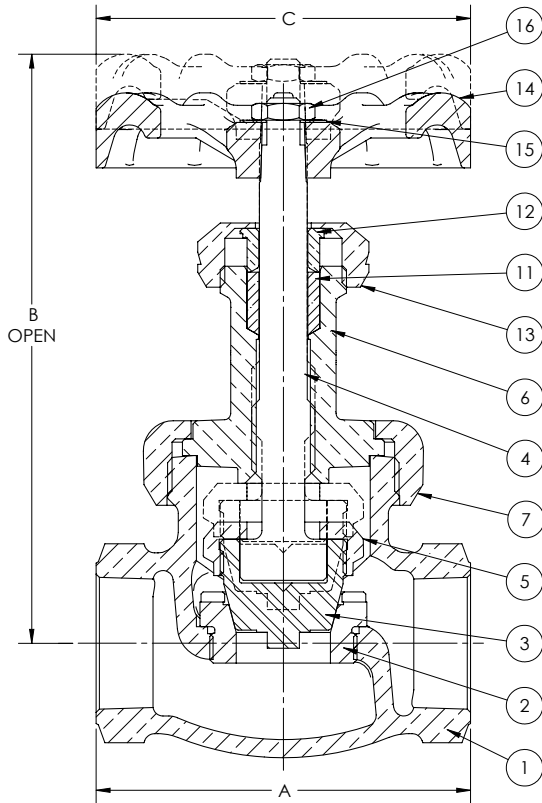


Class 300 • Union Bonnet* • Plug-Type Disc • Renewable SS Seats

382P Globe Valve



Materials of Construction

| No. | Description | Material | ASTM Spec. |
|-----|-------------------|-------------------------------------------|--------------|
| 1 | Body | Bronze | B-61 C92200 |
| 2 | Body Seat Ring | Stainless Steel | AISI 420 SS |
| 3 | Disc | Stainless Steel | AISI 420F SS |
| 4 | Stem | Bronze | B-371 C69400 |
| 5 | Disc Stem Ring | (1/4" - 3/4") Brass | B-16 H02 |
| | | (1" - 3") Bronze | B-61 C92200 |
| 6 | Bonnet | (1/4" - 3/8") Brass | B-16 H02 |
| | | (1/2" - 3") Bronze | B-61 C92200 |
| 7 | Union Bonnet Ring | Bronze | B-61 C92200 |
| 8 | Gasket | Synthetic/Glass Fiber with Nitrile Binder | |
| 9 | Stud | Steel Cadmium | A-109 C1145 |
| 10 | Nut | Mild Steel | A-563 Gr-A |
| 11 | Packing | Graphite (Asbestos Free) | Type 11 |
| 12 | Gland | Brass | B-16 H02 |
| 13 | Packing Nut | Brass (1/4 1 1/2") | B-16 H02 |
| | | Bronze (2-3") | B-61 C92200 |
| 14 | Handwheel | Cast Iron | |
| | | Ductile Iron | |
| 15 | ID Tag | Aluminum | |
| 16 | Lock Nut | Steel Cadmium | |

See page 8 for Pressure-Temperature Ratings.

| Industry Standards |
|--------------------|
| MSS SP-80, Type 3 |

Dimensions and Weights

Inches (millimeters) - Pounds (kilograms)

| Valve Size | Dimensions | | | Wt. |
|------------|------------|-------|-------|--------|
| | B | C | A | |
| 1/4 | 4.47 | 2.76 | 1.94 | 0.97 |
| | (114) | (70) | (49) | (0.44) |
| 3/8 | 4.47 | 2.76 | 1.94 | 0.95 |
| | (114) | (70) | (49) | (0.43) |
| 1/2 | 4.06 | 2.76 | 2.56 | 1.36 |
| | (103) | (70) | (65) | (0.62) |
| 3/4 | 4.98 | 2.76 | 2.96 | 2.20 |
| | (127) | (70) | (75) | (1.00) |
| 1 | 5.59 | 4.02 | 3.50 | 3.50 |
| | (142) | (102) | (89) | (1.59) |
| 1 1/4 | 6.48 | 4.02 | 4.02 | 4.93 |
| | (165) | (102) | (102) | (2.24) |
| 1 1/2 | 6.85 | 4.02 | 4.58 | 6.86 |
| | (174) | (102) | (116) | (3.12) |
| 2 | 7.39 | 4.76 | 5.70 | 12.83 |
| | (188) | (121) | (145) | (5.83) |
| *2 1/2 | 9.68 | 5.51 | 7.24 | 23.58 |
| | (246) | (140) | (184) | (10.7) |
| *3 | 11.02 | 5.98 | 8.50 | 34.83 |
| | (280) | (152) | (216) | (15.8) |

* 2 1/2" and 3" have Bolted Bonnet